

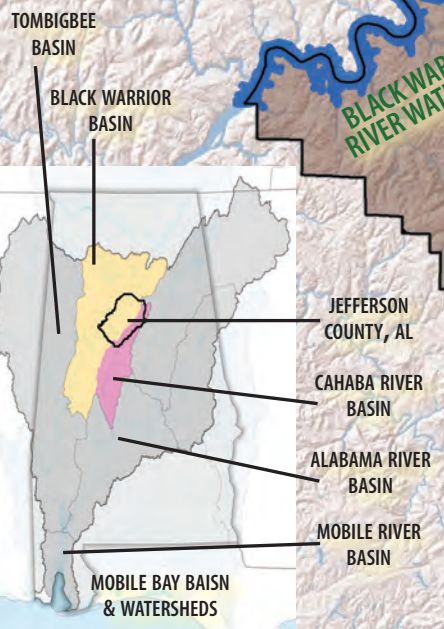
# 2025 STORMWATER CALENDAR



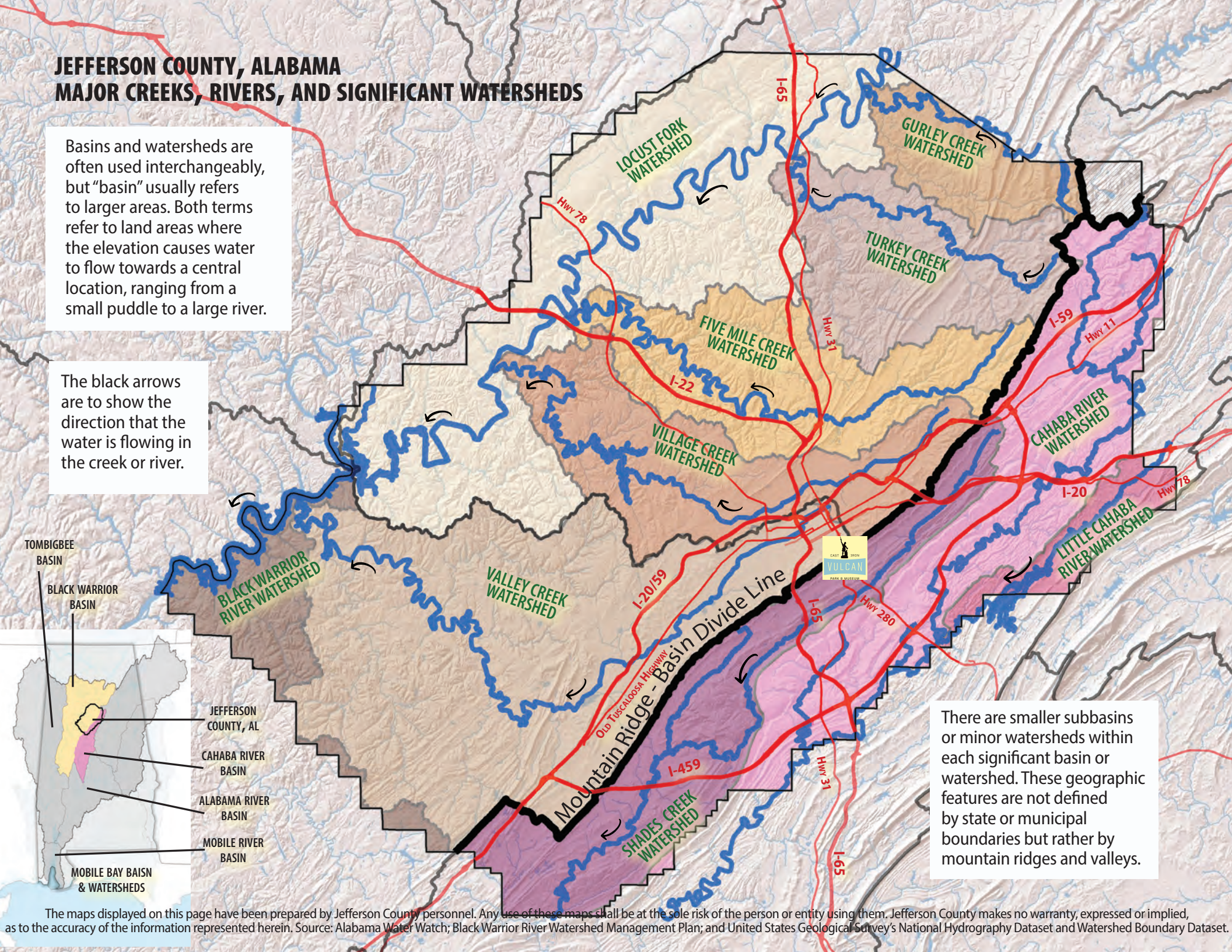
# JEFFERSON COUNTY, ALABAMA MAJOR CREEKS, RIVERS, AND SIGNIFICANT WATERSHEDS

Basins and watersheds are often used interchangeably, but "basin" usually refers to larger areas. Both terms refer to land areas where the elevation causes water to flow towards a central location, ranging from a small puddle to a large river.

The black arrows are to show the direction that the water is flowing in the creek or river.



There are smaller subbasins or minor watersheds within each significant basin or watershed. These geographic features are not defined by state or municipal boundaries but rather by mountain ridges and valleys.



The maps displayed on this page have been prepared by Jefferson County personnel. Any use of these maps shall be at the sole risk of the person or entity using them. Jefferson County makes no warranty, expressed or implied, as to the accuracy of the information represented herein. Source: Alabama Water Watch; Black Warrior River Watershed Management Plan; and United States Geological Survey's National Hydrography Dataset and Watershed Boundary Dataset.

## Personal Responsibility, Choices and Outcomes

Have you ever heard the phrase “take personal responsibility”? What does that really mean? Personal responsibility is accepting society’s standards for how individuals should behave and striving to live by those standards. It’s about obeying laws, following moral codes, and considering the potential impact of our actions on others. When we take personal responsibility, we are more likely to think before we act, and our choices often lead to better outcomes.

Taking personal responsibility looks like observing how people we respect, like family members or community leaders, handle challenges. It’s also about seizing opportunities to grow and connect with others. Taking responsibility for our actions, our role in the community, and our impact on the environment can make a big positive difference in our lives and the lives of those around us.

The 2025 calendar is not just a collection of ideas. It’s a practical guide to making a difference. It’s designed to inspire fresh perspectives and empower you to impact your community and environment positively. Discover valuable tips such as responsibly disposing of household hazardous waste and electronics, properly storing and applying yard chemicals, as well as maintaining vehicles. Join us in ensuring that only rain enters the stormwater drainage system. Let’s create a cleaner, healthier environment for all and be part of a more significant cause that benefits everyone.

## 2025 Waste Diversion Event Dates

Free events are available for Jefferson County residents to safely dispose of household quantities of hazardous waste, electronics, and TVs. Contact 205.325.8741 or visit [www.jccal.org](http://www.jccal.org) for event hours and locations and to learn about the items accepted.

Jan. 25 - Electronic Drop-Off / Paper Shredding Event

April 12 - Household Hazardous Waste Collection Events

May 10 - Electronic Drop-Off / Paper Shredding Event

June 14 - Electronic Drop-Off / Paper Shredding Event

Oct. 18 - Household Hazardous Waste Collection Events

## Water Resources and Contacts

**City of Bessemer Stormwater Program**  
[www.bessemeral.org/stormwater](http://www.bessemeral.org/stormwater); 205-424-4060

**City of Birmingham Stormwater Program**  
[www.birminghamal.gov/stormwatermanagement](http://www.birminghamal.gov/stormwatermanagement); 205-254-7771

**City of Leeds Stormwater Program**  
[www.leedsalabama.org/storm-water](http://www.leedsalabama.org/storm-water); 205-699-2585

**City of Hoover Stormwater Program**  
[www.hooveral.org/631/Stormwater-Management](http://www.hooveral.org/631/Stormwater-Management); 205-739-6888

**Jefferson County Department of Health Watershed Protection Program / SWMA** 205-930-1999  
[www.jcdh.org](http://www.jcdh.org) (search watershed protection program)

**Jefferson County Stormwater Program**  
[www.jccal.org](http://www.jccal.org); 205-325-8741

**ADEM** [adem.state.al.us](http://adem.state.al.us); 334-260-4501  
Statewide agency that administers the Municipal NPDES Stormwater Permit to local jurisdictions.

**Alabama Water Watch**  
[www.alabamawaterwatch.org](http://www.alabamawaterwatch.org)  
Statewide citizen-based water monitoring program.

**Alabama Rivers Alliance**  
[www.alabamarivers.org](http://www.alabamarivers.org)  
Statewide network of groups working to protect and restore all of Alabama’s water resources.

**Auburn University Water Resources Center** <https://aaes.auburn.edu/wrc>  
Providing research-based information for improved management and protection of Alabama’s water resources.

**Black Warrior Riverkeeper**  
[www.blackwarriorriver.org](http://www.blackwarriorriver.org)  
Promoting clean water throughout the Black Warrior River watershed.

**Cahaba River Society**  
[www.cahabariversociety.org](http://www.cahabariversociety.org)  
Working to protect and restore the Cahaba River watershed and its rich diversity of life.

**Cahaba Riverkeeper**  
[www.cahabariverkeeper.org](http://www.cahabariverkeeper.org)  
Working for the protection and ecological integrity of the Cahaba watershed.

**Freshwater Land Trust**  
[www.freshwaterlandtrust.org](http://www.freshwaterlandtrust.org)  
Conserving, connecting, and caring for land and water in Central Alabama.

**Friends of Shades Creek**  
[www.shadescreek.org](http://www.shadescreek.org)  
Working for the protection of, and responsible development, along Shades Creek.

**Jefferson County Conservation District**  
[www.jeffersonco.wixsite.com/jeffersonswcd](http://www.jeffersonco.wixsite.com/jeffersonswcd)  
Providing service, leadership, and assistance for the wise use, conservation, and development of natural resources.

**Village Creek Society, Inc.**  
[www.villagecreeksociety.org](http://www.villagecreeksociety.org)  
Seeking to improve Village Creek.

# BENEFITS TO CLEAN WATER

The 1972 Clean Water Act (CWA) is the primary federal law in the United States governing water pollution and one of the first influential environmental laws enacted. It aims to restore and maintain the nation's waters' chemical, physical, and biological integrity. The Environmental Protection Agency (EPA) administers the CWA in coordination with state governments. The Alabama Department of Environmental Management (ADEM) is the state agency that administers the CWA and sets surface water standards.

The 1987 Amendment to the CWA was a significant milestone. It phased in laws requiring local governments with populations over 100,000 to address Nonpoint Source (NPS) Pollution or polluted runoff. This runoff, created when rain picks up pollution from the ground, flows into the Municipal Separate Storm Sewer System (MS4) and drains into creeks and streams. ADEM issues MS4 permits to cities and counties, requiring them to reduce polluted runoff and improve water quality.

Your actions can make a significant difference in maintaining water quality. Please help by never placing or dumping anything in the MS4!

Photo, Friends of Shades Creek



**As a responsible citizen, you play a crucial role in protecting our water resources.**

To report a sanitary sewer overflow, call 205-942-0681.  
 To report suspected water pollution within unincorporated  
 Jefferson County, call 205-325-5792  
 Within the City of Birmingham, call 311.  
 For all other municipalities, contact the local city hall.

# JANUARY 2025

## THIS MONTH, EMBRACE YOUR ROLE IN IMPROVING WATER QUALITY BY MAKING ONE CHANGE THIS YEAR!

January is perfect for ensuring your vehicle and gas-powered lawn equipment are in good working order. Spills and leaks of oil and other petroleum products from equipment can be washed by rain into waterways, posing a serious threat to the delicate balance of our ecosystems. These products are toxic to fish and other animals that live in our creeks, rivers, and lakes.

If you notice a spill or leak, rest assured that you can quickly and efficiently manage it. Sprinkling absorbent material, such as cat litter, on the spill will soak it up. Once the spill is absorbed, sweep it up and properly dispose of the material according to the product label.

SUNDAY	MONDAY	TUESDAY	WEDNESDAY	THURSDAY	FRIDAY	SATURDAY
			<b>1</b> New Year's Day	<b>2</b>	<b>3</b>	<b>4</b>
<b>5</b>	<b>6</b>	<b>7</b>	<b>8</b>	<b>9</b>	<b>10</b>	<b>11</b>
<b>12</b>	<b>13</b>	<b>14</b>	<b>15</b>	<b>16</b>	<b>17</b>	<b>18</b>
<b>19</b>	<b>20</b> Martin Luther King Jr. Day	<b>21</b>	<b>22</b>	<b>23</b>	<b>24</b>	<b>25</b> FREE Electronic Drop-Off & Paper Shredding Event 9 am - 11:30 am Salamander Festival
<b>26</b>	<b>27</b>	<b>28</b>	<b>29</b> Chinese New Year	<b>30</b>	<b>31</b>	

### SPECIAL EVENTS:

January 25, bring your unwanted electronics and paper to be shredded at the [Birmingham Zoo](#) between 9:00 am - 11:30 am.

January 25, plan to attend the annual Salamander Festival sponsored by Friends of Shades Creek. Visit [shadescreek.org](http://shadescreek.org) for details.

Participate in a MLK Day of Service Litter Clean-up; visit [jccal.org](http://jccal.org) for details.



# REDUCING STORMWATER RUNOFF



Reducing stormwater runoff is not just a goal, but a commitment to protecting our water resources. When it rains in undeveloped areas, water can soak into the ground. In developed areas, rain water washes from impervious structures such as rooftops, streets, sidewalks, and driveways into the storm water drainage system. While it is necessary to have impervious structures in our environment, they prevent rainwater from soaking into the ground. During heavy downpours, fast-moving water can lead to flooding, can cause gullies in landscapes, and can erode streambanks. The more we can slow the speed of water leaving impervious surfaces and can spread it out into landscaped areas so it can filter into the ground, the less runoff there will be. Less runoff = less water to manage = less flooding = less water pollution in our creeks, rivers, and lakes.

You can increase infiltration in your landscape by:

- Diverting downspouts away from the street/driveway/walkway and into vegetated areas.
- Using permeable items when installing or replacing driveways and walkways.
- Terracing sloped yards.
- Planting and preserving trees.
- Adding organic matter, such as compost, to your soil.

**Managing rain near where it falls will help reduce runoff and the potential for flooding.**

To report a sanitary sewer overflow, call 205-942-0681.  
 To report suspected water pollution within unincorporated  
 Jefferson County, call 205-325-5792  
 Within the City of Birmingham, call 311.  
 For all other municipalities, contact the local city hall.

# FEBRUARY 2025

## SHOW YOUR WATERSHED SOME LOVE BY PLANTING A TREE IN HONOR OF ALABAMA'S ARBOR WEEK!

Trees and their canopies are useful in reducing stormwater runoff. Trees provide valuable benefits to both commercial and private properties. They help clean the air, reduce energy needs, mitigate heat island effects, and absorb and divert rainfall. Their roots and fallen leaves improve soil and promote rainwater infiltration, providing a wonderful display of color in the fall.

The last full week of February is designated as Arbor Week in Alabama. This year, it is February 16-22, 2025. It started in 1887 with Alabama Governor Thomas Seay signing the state's first Arbor Day Proclamation. Visit [forestry.alabama.gov](http://forestry.alabama.gov) for more information.

SUNDAY	MONDAY	TUESDAY	WEDNESDAY	THURSDAY	FRIDAY	SATURDAY
						1
2 Groundhog Day	3	4	5	6	7	8
9	10	11	12	13	14 Valentine's Day	15
16 Alabama's Arbor Week Begins	17 President's Day	18	19	20	21	22
23	24	25	26	27	28 Ramadan (begins at sundown)	

### SPECIAL EVENTS:

Alabama Arbor Week begins February 16, 2025 and ends on February 22, 2025. Celebrate by planting a tree and helping it grow because trees are beneficial in reducing Stormwater Runoff.

Register your community to participate in the volunteer roadside litter spring clean-up through the Alabama People Against a Littered State; call 205-325-8741 for more information.



# STORMWATER-MINDFUL LAWNS



A lush green lawn is possible without obsessively applying yard chemicals while being stormwater friendly. We often rely on what our parents did or the store salesperson said regarding yard maintenance, not knowing if our actions have negative consequences. Nitrogen will green up most lawns but also can damage certain grass types. If you want your lawn to be the envy of the neighborhood, take the time to research alternatives. It may save you time and money and be less environmentally harmful.

Lawn type: What grass will grow best in your yard? Grass needs certain conditions to thrive. Does your yard have them?

Soil conditions: What is your soil makeup? The quality of your soil is a significant factor in how lush and green a garden or lawn grows! What nutrients does your soil need to grow your chosen grass? You cannot tell from looking at the soil, and overapplying fertilizer can create polluted runoff. For \$10, Auburn University's Soil Testing Laboratory will send you a report detailing lime, fertilizer, and other nutrient needs within 7 days of receiving your soil sample. Visit [www.aces.edu/soiltest](http://www.aces.edu/soiltest) for more information and to start the submittal process.

**Overapplied fertilizer carried by rain to waterways creates algae blooms which can kill fish.**



To report a sanitary sewer overflow, call 205-942-0681.  
 To report suspected water pollution within unincorporated  
 Jefferson County, call 205-325-5792  
 Within the City of Birmingham, call 311.  
 For all other municipalities, contact the local city hall.

# MARCH 2025

## BE MINDFUL OF YOUR LOCAL CREEK DURING SPRING CLEANING.

Excessive use of herbicides can pollute water and can harm aquatic life including fish, frogs, and insects. It's crucial to use herbicides sparingly and responsibly. Identifying the type of weeds and choosing the right product for effective treatment are essential. By following the product labels and instructions, you can ensure responsible herbicide use thus keeping our waterways clean and safe for everyone.

Let's work together to keep our waterways clean and safe.

SUNDAY	MONDAY	TUESDAY	WEDNESDAY	THURSDAY	FRIDAY	SATURDAY
						1
2	3	4	5	6	7	8
9 Daylight Savings Time Begins	10	11	12	13 Small Holi (first day)	14 Big Holi (second day)	15
16	17 St. Patrick's Day	18	19	20	21	22 World Water Day
23	24	25	26	27	28	29 Ramadan (ends at sundown)
30	31	SPECIAL EVENTS: Participate in the Valley Creek Spring Clean- up or the Mulga Loop Road Clean-up; visit <a href="http://jccal.org">jccal.org</a> for details. Start gathering your items, and plan to attend the FREE Household Hazardous Waste Collection Events, which are open to Jefferson County residents and will be held at three locations on Saturday, April 12, 2025. Call 205-325-8741 or visit <a href="http://www.jccal.org">www.jccal.org</a> for more information.				



# CONSEQUENCES OF LITTER

Simply put, litter is trash in a place where it does not belong. While we are quick to judge where it comes from, some sources of litter are not obvious.

**Litter comes from household and business trash collection areas.** Trash cans can get knocked over by wind or animals; dumpsters can overflow or cannot be correctly closed.

**Litter comes from uncovered loads, motorists / passengers, pedestrians, and boaters.** Deliberate or not, items blow out of vehicles, water vessels, and outdoor trash cans, especially on windy days. People drop a significant amount of litter on the ground. Parking lots and areas around traffic lights are often highly littered.

**There are many negative consequences to a littered community:**

- It looks terrible and smells even worse.
- Auto insurance rates increase because of the many litter-related accidents.
- Staff and funding spent picking up litter could be allocated to pave roads/repair potholes.
- Waterways get polluted thus impacting the places where we swim, fish, and get our drinking water.

Photo, Nelson Brooke

**Litter is a problem. You can easily control this by properly disposing of your trash.**

To report a sanitary sewer overflow, call 205-942-0681.  
 To report suspected water pollution within unincorporated  
 Jefferson County, call 205-325-5792  
 Within the City of Birmingham, call 311.  
 For all other municipalities, contact the local city hall.

# APRIL 2025

**THIS IS A PERFECT MONTH  
 TO CONSIDER REDUCING  
 YOUR STORMWATER  
 RUNOFF BY INSTALLING  
 A RAIN BARREL OR  
 A RAIN GARDEN.**

When stormwater runoff moves swiftly, it bypasses the soil's natural filtration process. The quickly moving water can pick up significantly more pollutants (such as motor oil, fertilizers, eroded soil, sewage, pet waste, and litter) thus posing a serious threat to our environment.

Large amounts of fast-moving stormwater runoff can overwhelm drainage systems, flood streets, and erode stream banks. You can capture, hold, and allow stormwater to soak into the ground by aerating your lawn, installing a rain garden, or reusing the stormwater by collecting it in a rain barrel attached to your gutters.

SUNDAY	MONDAY	TUESDAY	WEDNESDAY	THURSDAY	FRIDAY	SATURDAY
		1	2	3	4	5
6	7	8	9	10 Voting Begins For LitterQuitters.org!	11	12 Household Haz. Waste Collection Day 8 am-11:30 am Passover (beings at sunset)
13	14	15	16	17	18 Good Friday	19 Passover ends at sunset
20 Easter Sunday	21	22 Earth Day Voting Ends For LitterQuitters.org!	23	24	25 National Arbor Day	26
27	28	29	30			

**SPECIAL EVENTS:**

Cast your vote for your favorite anti-litter video on [www.litterquitters.org](http://www.litterquitters.org) between April 10 and April 22!

FREE Household Hazardous Waste Collection Event which is open to residents of Jefferson County, Saturday, April 12, 2025, from 8:00 am -11:30 am. Three locations to choose from: Bessemer (1205 15th Ave. N), Gardendale (940 Main Street), and Irondale (3900 Grants Mill Road). Call 205-325-8741 or visit [www.jccal.org](http://www.jccal.org) to verify the locations and identify what you can bring.



# DISPOSING OF PET WASTE



Sanitary sewer systems handle human waste containing fecal coliform and other pathogens. Wastewater enters the water treatment plants, then gets cleaned, and then gets discharged into our waterways. When it comes to our beloved pets, there is a misunderstanding that their poo is not as bad as human poo. People may be unaware that an average pile of dog waste contains 2.5 billion fecal coliform bacteria, viruses, and parasites.

Here is the scoop: Most wild animals do not live near one another. Nothing is usual about the 150,000 domesticated dogs concentrated in an area the size of Jefferson County's urban and suburban areas, producing 76,000 pounds of waste a day. Multiply that by 365 days, and you can see how this adds up fast! Waste left on the ground can be washed by rain into our local waterways, creating harmful bacteria pollution.

Remember to keep it clean, Jefferson County, and always pick up pet waste, tie it in a plastic bag, and place it in the trash. Do this every time, in every place including your yard and most definitely in public spaces.

**Pet waste can harm people and our waterways when not disposed of properly.**

To report a sanitary sewer overflow, call 205-942-0681.  
 To report suspected water pollution within unincorporated  
 Jefferson County, call 205-325-5792  
 Within the City of Birmingham, call 311.  
 For all other municipalities, contact the local city hall.

# MAY 2025

## BE MINDFUL OF THE CHEMICALS YOU USE IN YOUR YARD TO AVOID HARMING ALL THE BUGS IN YOUR LANDSCAPE.

Caterpillars transform into beautiful butterflies, and baby birds rely on various insects for nutrition.

Not all garden bugs are detrimental. Some are beneficial as they consume harmful bugs. In addition, others play a crucial role as pollinators and a food source for baby birds.

If bugs are taking over your yard, don't hesitate to contact the Alabama Extension's local Plant Diagnostic Lab at the Birmingham Botanical Gardens. Their experts can help identify the issue and can offer practical solutions. For further assistance, please call 205-879-6964.

SUNDAY	MONDAY	TUESDAY	WEDNESDAY	THURSDAY	FRIDAY	SATURDAY
				1	2	3
4	5 Cinco de Mayo	6	7	8	9	10 FREE Electronic Drop-off & Paper Shredding Event 9:00 am - 11:30 am
11 Mother's Day	12	13	14	15	16	17 Rain Barrel Workshop
18	19	20	21	22	23	24
25	26 Memorial Day	27	28	29	30	31

### SPECIAL EVENTS:

Attend this month's FREE Electronic Drop-off and Paper Shredding Event held at the Jefferson County Satellite Courthouse in Center Point from 9:00 am - 11:30 am. Call 205-325-8741 for more information or visit [jccal.org](http://jccal.org).

Rain Barrel Workshop, visit [jvtf.org](http://jvtf.org) for details. Pre-registration is required.



# STORMWATER RUNOFF



Most people have never taken the time to find out where their rainwater goes after it falls on their roof, yet stormwater runoff is the most significant threat to our nation's waterways. Stormwater can both be a great resource and a significant problem. Stormwater runoff refers to the rainwater the ground does not absorb during rainfall. It is never treated; it flows from yards to the stormwater drainage system, winding up in the nearest creek, river, lake, or stream. The runoff collects pollutants such as yard chemicals, vehicle fluids, animal waste, and loose dirt as it runs across roadways, driveways, garden beds, and lawns. This runoff, commonly called nonpoint source pollution (NPS), is widespread because it occurs anytime it rains in every neighborhood, city, and state.

Everyone plays a vital role in combating NPS; it does not fall to one group or community. Things YOU can do to help include:

- Picking up your pet's waste off the ground.
- Fixing and maintaining vehicles to prevent drips and drops of fluids, oil, and grease.
- Storing yard chemicals in dry, covered areas to avoid exposure to rain.
- Covering the bare ground with vegetation, mulch, or pervious pavers.
- Diverting roof runoff to vegetated areas slows the rain down, allowing it to spread out and absorb into the ground.

**Rain is not treated before it drains into waterways. Often, it carries items along, creating water pollution.**

To report a sanitary sewer overflow, call 205-942-0681.  
 To report suspected water pollution within unincorporated  
 Jefferson County, call 205-325-5792  
 Within the City of Birmingham, call 311.  
 For all other municipalities, contact the local city hall.

# JUNE 2025

**TAKE EXTRA CARE  
 WHEN APPLYING LAWN  
 CHEMICALS, PARTICULARLY  
 FERTILIZERS CONTAINING  
 PHOSPHORUS (P).**

Alabama's soil naturally contains high phosphorus levels (the middle number on a fertilizer bag). If this nutrient is applied but is not utilized by plants, it can be washed away into nearby creeks or streams during rainfall, leading to harmful algae blooms. These blooms can significantly reduce oxygen levels in the water, endangering the survival of fish and other aquatic life.

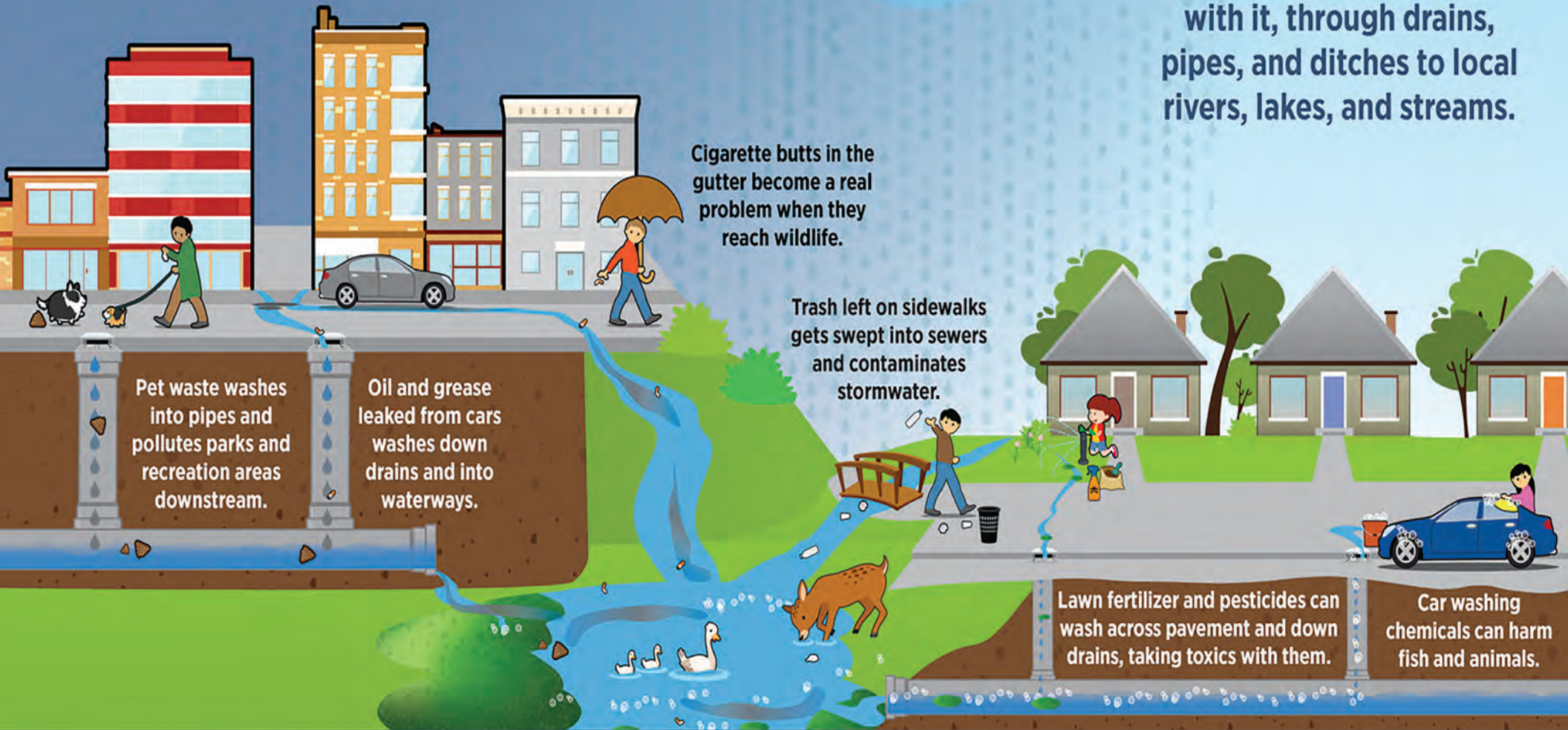
You can save money and protect the environment by testing your soil to identify the appropriate fertilizer for a lush and healthy lawn. Soil test kits are readily available at Alabama Extension offices. For more information, please call 205-879-6964.

SUNDAY	MONDAY	TUESDAY	WEDNESDAY	THURSDAY	FRIDAY	SATURDAY
1	2	3	4	5 World Environment Day	6	7
8 World Oceans Day	9	10	11	12	13	14 FREE Electronic Drop-off & Paper Shredding Event 8 am - 11:30am Fishing Rodeo
15 Father's Day	16	17	18	19 Juneteenth Independence Day	20	21
22	23	24	25	26	27	28
29	30					
The following center page, as well as the first two pages, can be used as posters when you are done with the calendar. Just carefully take out the staples.		SPECIAL EVENTS: FREE Electronic Drop-off & Paper Shredding Event, <u>Jefferson County Valley Creek Water Reclamation Facility in Bessemer</u> from 9:00 am - 11:30 am. Call 205-325-8741 for more information or visit <a href="http://www.jccal.org">www.jccal.org</a> . Grab your fishing pole and attend the City of Birmingham's Fishing Rodeo at Eastlake Park.				



# Stormwater: Where It Flows, Everything Goes

When it rains, snows, or sleet, water hits hard surfaces and takes anything on that surface with it, through drains, pipes, and ditches to local rivers, lakes, and streams.



## Where Stormwater Flows, Everything Goes



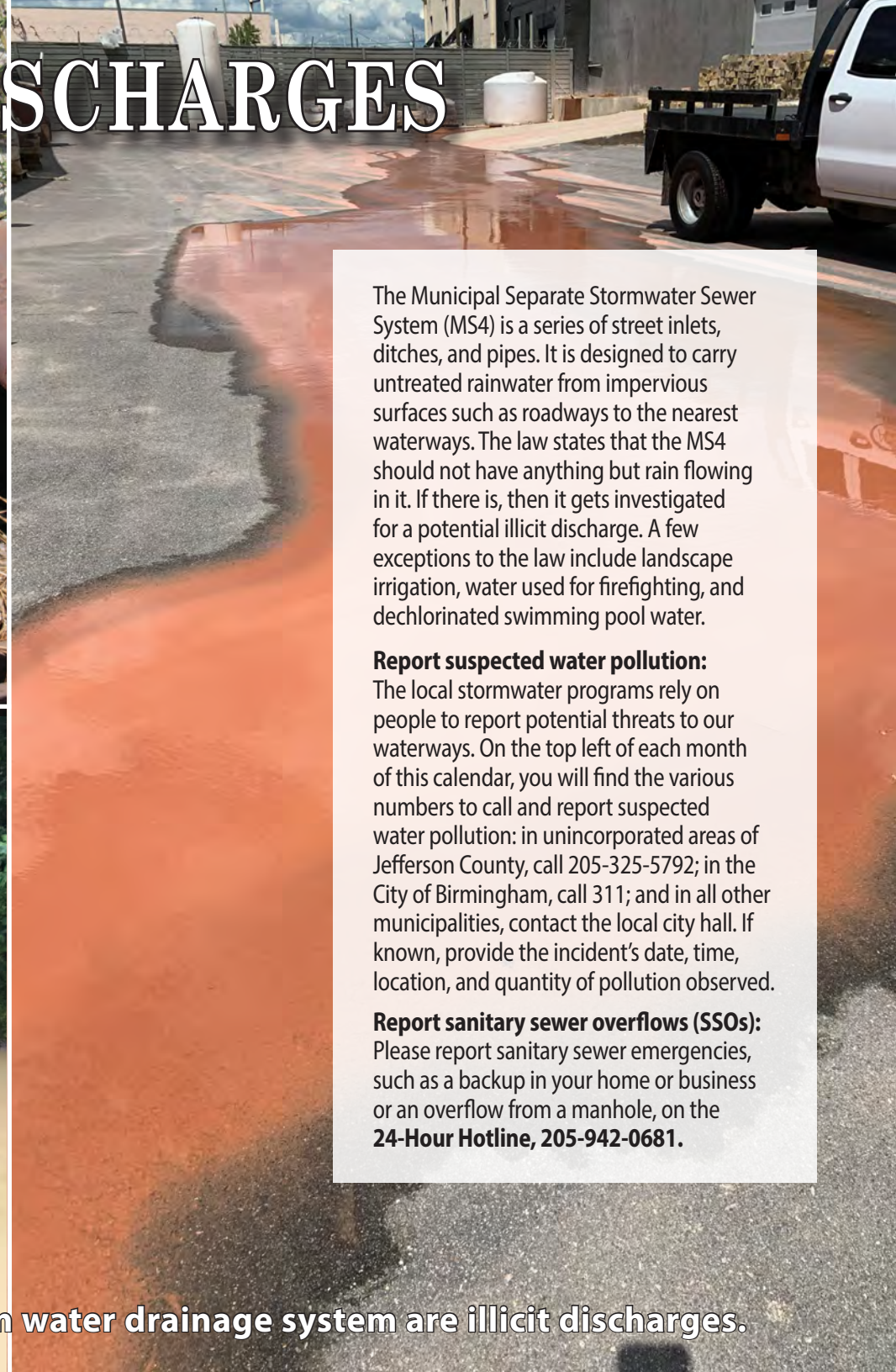
The stormwater drainage system is interconnected. Everything that rain comes in contact with flows downstream to another location until it reaches the ocean.



The runoff from yards, sidewalks, and parking lots in Jefferson County affects the health of Mobile Bay and the Gulf of Mexico. Let's work together to protect the purity of Alabama's waterways and ensure that only rain enters the storm drainage system.



# ILLICIT DISCHARGES



The Municipal Separate Stormwater Sewer System (MS4) is a series of street inlets, ditches, and pipes. It is designed to carry untreated rainwater from impervious surfaces such as roadways to the nearest waterways. The law states that the MS4 should not have anything but rain flowing in it. If there is, then it gets investigated for a potential illicit discharge. A few exceptions to the law include landscape irrigation, water used for firefighting, and dechlorinated swimming pool water.

#### **Report suspected water pollution:**

The local stormwater programs rely on people to report potential threats to our waterways. On the top left of each month of this calendar, you will find the various numbers to call and report suspected water pollution: in unincorporated areas of Jefferson County, call 205-325-5792; in the City of Birmingham, call 311; and in all other municipalities, contact the local city hall. If known, provide the incident's date, time, location, and quantity of pollution observed.

#### **Report sanitary sewer overflows (SSOs):**

Please report sanitary sewer emergencies, such as a backup in your home or business or an overflow from a manhole, on the **24-Hour Hotline, 205-942-0681.**

Unpermitted discharges that enter the storm water drainage system are illicit discharges.

To report a sanitary sewer overflow, call 205-942-0681.  
 To report suspected water pollution within unincorporated  
 Jefferson County, call 205-325-5792  
 Within the City of Birmingham, call 311.  
 For all other municipalities, contact the local city hall.

# JULY 2025

## THIS INDEPENDENCE DAY, CELEBRATE YOUR RIGHT TO CLEAN WATER!

The Clean Water Act and its amendments were put in place to safeguard the health and safety of all Americans. Their main goal is to ensure the purity of the nation's waters by governing the types and quantities of pollutants that can be discharged into water bodies to meet specific water quality standards.

You can play a crucial part in preserving clean water by supporting, and joining forces with, your local watershed group. The first and the last two pages of the calendar provide a list of groups in and around Jefferson County.

SUNDAY	MONDAY	TUESDAY	WEDNESDAY	THURSDAY	FRIDAY	SATURDAY
		1	2	3	4 Independence Day	5
6	7	8	9	10	11	12
13	14	15	16	17	18	19
20	21	22	23	24	25	26
27	28	29	30	31		

Get ready to attend the FREE Household Hazardous Waste Collection Event. This event offers Jefferson County residents a convenient opportunity to safely dispose of unwanted HHW on Saturday, October 18, 2025. You can choose from two locations: Camp Bessemer at 3295 King Street and Camp Ketona at 131 County Shop Road. For more information, call 205-325-8741 or visit [www.jccal.org](http://www.jccal.org).

The previous center page, as well as the first two and last two pages, can be used as a poster when you are finished with the calendar. Just carefully take out the staples.



# SEDIMENT POLLUTION



Updating your landscape can enhance your home's appeal and provide a relaxing space to enjoy with family and friends. DIY work can save money, but it often takes much longer than expected. In Alabama, we receive about 56 inches of rain a year, and strong storms can quickly develop, even when not forecasted. While rain is excellent for plants, it can wash away exposed dirt or soil into the stormwater drainage system, turning harmless particles into sediment pollution. Sediment seriously impacts our waterways, harms water quality and wildlife by settling out and covering the creekbeds, destroys aquatic nesting sites, smothers eggs, and displaces water, which can lead to flooding.

Your part might seem small, but it makes a significant difference. Always:

- Apply mulch to your landscaped areas; it will help retain moisture, stabilize the soil temperature, and prevent erosion.
- Cover bare dirt piles with tarps to protect the particles from blowing away in the wind or washing away with the rain.
- Before any major land-disturbing activities, call the local municipality to see if a permit is needed. At a minimum, learn what steps you should take to reduce erosion.

**Exposed soil washes with rain into the stormwater drainage system, becoming sediment pollution.**

To report a sanitary sewer overflow, call 205-942-0681.  
 To report suspected water pollution within unincorporated  
 Jefferson County, call 205-325-5792  
 Within the City of Birmingham, call 311.  
 For all other municipalities, contact the local city hall.

# AUGUST 2025

## REMIND YOUR CHILDREN NOT TO LITTER AS THEY HEAD BACK TO SCHOOL!

Littering poses a significant challenge in Jefferson County, impacting the environment and quality of life. Rain washes litter into our creeks and rivers, which are vital for recreational activities and serve as our drinking water supply.

It's crucial to avoid littering. Reinforce this message with your family members, especially with teenage children. There are ample opportunities to dispose of trash including at gas stations.

Visit [www.LitterQuitters.org](http://www.LitterQuitters.org) to find out how students are working to combat the littering issue. Thank you for your support!

SUNDAY	MONDAY	TUESDAY	WEDNESDAY	THURSDAY	FRIDAY	SATURDAY
					1	2
3	4	5	6	7	8	9
10	11	12	13	14	15	16
17	18	19	20	21	22	23
24	25	26	27	28	29	30
31	Get ready to attend the FREE Household Hazardous Waste Collection Event. This event offers Jefferson County residents a convenient opportunity to safely dispose of unwanted HHW on Saturday, October 18, 2025. You can choose from two locations: <u>Camp Bessemer at 3295 King Street</u> and <u>Camp Ketona at 131 County Shop Road</u> . For more information, call 205-325-8741 or visit <a href="http://www.jccal.org">www.jccal.org</a> .					



# REDUCING STORMWATER RUNOFF



In natural environments, rainwater is slowed down by trees and vegetation before being absorbed into the ground. Rain washes off nonporous surfaces such as roofs, roads, and sidewalks in urban areas. It travels through the stormwater drainage system and empties into the nearest water bodies without undergoing treatment.

Alabama experiences an average annual rainfall of 56 inches, and heavy downpours are becoming increasingly common. Our drainage infrastructure struggles to manage large volumes of water swiftly, resulting in street flooding and streambank erosion.

Homeowners can play a vital role in reducing stormwater runoff from their properties by redirecting roof runoff to landscaped areas. Vegetation slows the water's flow, allowing it time to soak into the ground. Another effective strategy is installing rain barrels to collect and store rainwater from the roof for later use.

Help us keep it clean, Jefferson County! Working together, we can help protect our waterways and reduce the potential for flooding in our communities.

**Collecting, storing, and later using rainwater can help reduce flooding.**

To report a sanitary sewer overflow, call 205-942-0681.  
 To report suspected water pollution within unincorporated  
 Jefferson County, call 205-325-5792  
 Within the City of Birmingham, call 311.  
 For all other municipalities, contact the local city hall.

# SEPTEMBER 2025

## WORK TOGETHER TO STOP TO LOCALIZED FLOODING BY KEEPING YARD DEBRIS OUT OF THE STORMWATER DRAINAGE SYSTEM.

Our community plays a crucial role in preventing flooding by ensuring that the stormwater drainage system, designed solely for rainwater, doesn't get clogged with leaves and grass clippings.

It's crucial to convey to your yard professional the importance of not blowing yard debris into the street, stormwater inlet, or drainage ditch because those structures play a significant role in preventing localized flooding.

Contact the local city hall to explore yard debris services and resources they offer because not all cities provide loose-leaf curbside pickup.

SUNDAY	MONDAY	TUESDAY	WEDNESDAY	THURSDAY	FRIDAY	SATURDAY
	<b>1</b> Labor Day	<b>2</b>	<b>3</b>	<b>4</b>	<b>5</b>	<b>6</b>
<b>7</b>	<b>8</b>	<b>9</b>	<b>10</b>	<b>11</b>	<b>12</b>	<b>13</b>
<b>14</b>	<b>15</b>	<b>16</b>	<b>17</b>	<b>18</b>	<b>19</b>	<b>20</b>
<b>21</b>	<b>22</b> Rosh Hashana (begins at sundown)	<b>23</b>	<b>24</b> Rosh Hashana (ends at sundown)	<b>25</b>	<b>26</b>	<b>27</b>
<b>28</b>	<b>29</b>	<b>30</b>				

### SPECIAL EVENTS:

Fall Shades Creek Volunteer Litter Clean-up is usually held the last Saturday in September. Visit [www.shadescreek.org](http://www.shadescreek.org) for more information.  
 Fall Village Creek Volunteer Litter Clean-up; call 205-325-8741 for details.

Start gathering your items and plan to attend the FREE Household Hazardous Waste Collection Event, which is open to Jefferson County residents and will be held at two locations on Saturday, October 18, 2025. Call 205-325-8741 or visit [www.jccal.org](http://www.jccal.org) for more information.



# PROPER DISPOSAL OF CLEANERS

We all have them in our homes - items to help us keep our house clean and free of dirt and germs. Chances are you have never thought about these everyday household items as being household hazardous waste (HHW) that needs special care when disposed of, should not be placed in the trash for curbside pickup, should not be emptied into sinks or drains, should not be flushed down toilets, and should not be poured onto the ground and discarded into storm drains. Well, these items are HHW. A good rule of thumb is that the need to wear gloves when handling or using these products means special care is required when storing and disposing of them. HHW Collection Events are held in Jefferson County at various locations in April and October.

Items to bring to HHW collection events:

- Batteries (alkaline, rechargeable, vehicle)
- Cleaners (bath, kitchen, deck, vehicle)
- Electronics (televisions and monitors)
- Fluorescent light bulbs (CFL included)
- Household used cooking oil and grease
- Mercury and items containing mercury
- Paint (latex, oil, aerosols)
- Prescription drugs
- Yard chemicals
- Vehicle fluids (gas, used motor oil, fuel)

Visit [www.jccal.org](http://www.jccal.org), [KeptItCleanJeffCo](http://KeptItCleanJeffCo), for the HHW Collection Events dates!



**Cleaning products and other HHW require special care when applying, storing, or disposing of them.**



To report a sanitary sewer overflow, call 205-942-0681.  
 To report suspected water pollution within unincorporated  
 Jefferson County, call 205-325-5792  
 Within the City of Birmingham, call 311.  
 For all other municipalities, contact the local city hall.

# OCTOBER 2025

## HELP REDUCE THE NUMBER OF NUTRIENTS IN OUR WATERWAYS!

Nutrient pollution occurs when too many nutrients, such as nitrogen (N) and phosphorus (P), are washed into waterways by rain. This can be caused by over-applied fertilizers, sewer overflows, dog waste, and failing septic systems.

Here's what you can do:

- Test your soil at least once every three years. Based on your soil test, apply only the nutrients the plant needs. Calibrate the spreader to ensure the correct amount of product is used.
- Have your septic system inspected and pumped out at least every five years.
- Always pick up your pet's waste, bag it, and place it in the trash for proper disposal.

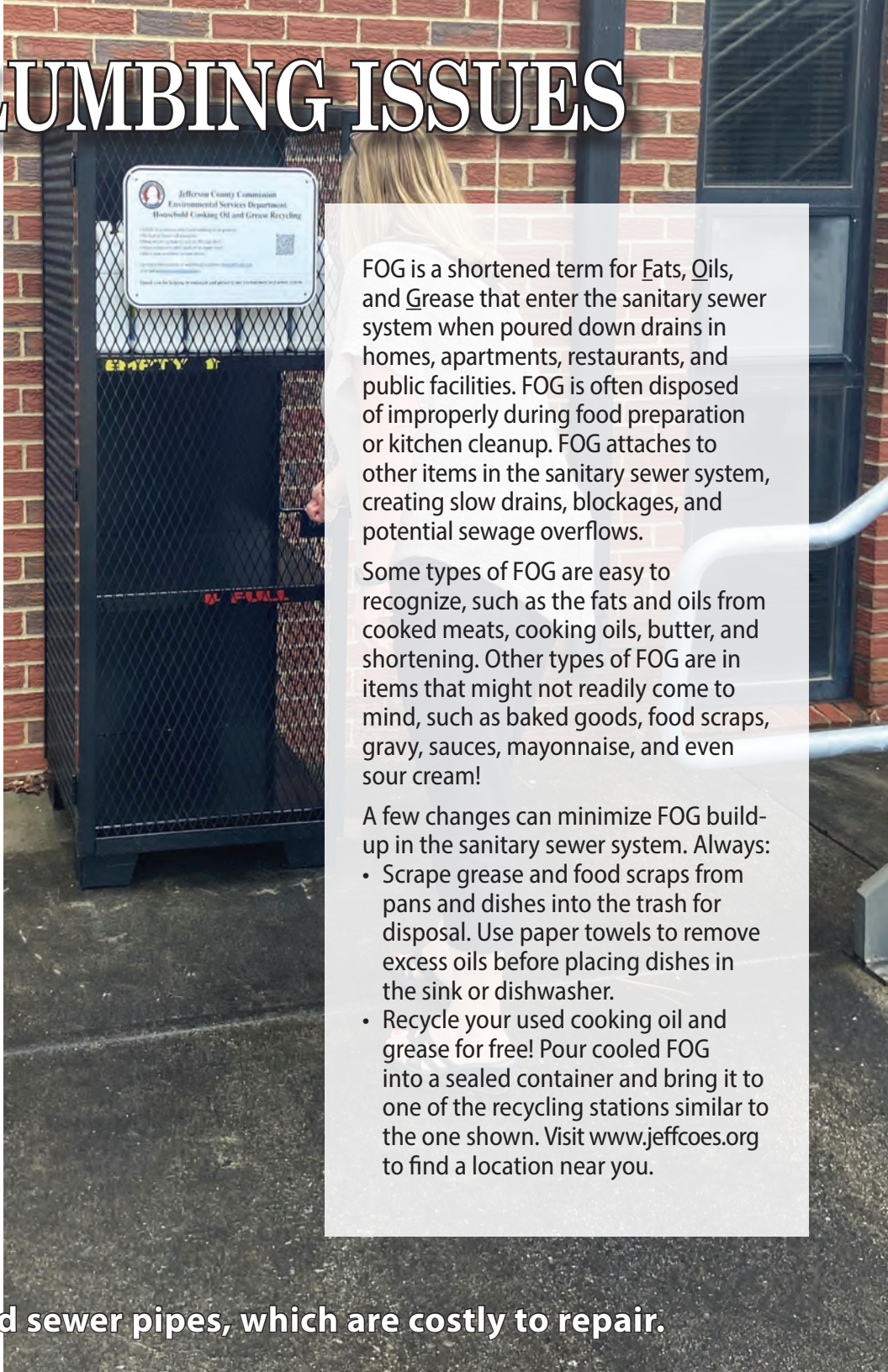
SUNDAY	MONDAY	TUESDAY	WEDNESDAY	THURSDAY	FRIDAY	SATURDAY
			1 Yom Kippur (begins at sundown)	2	3	4
5	6	7	8	9	10	11
12	13 Columbus Day (observed)	14	15	16	17	18 Household Hazardous Waste Day 8:00 am - 11:30 am
19	20	21	22	23	24	25
26	27	28	29	30	31 Halloween	

### SPECIAL EVENTS:

FREE Household Hazardous Waste Collection Event which is open to residents of Jefferson County, Saturday, October 18, 2025, from 8:00 am - 11:30 am. Two locations to choose from: [Camp Bessemer, 3295 King Street, 35023](#) OR [Camp Ketona, 131 County Shop Road, 35217](#). Visit [www.jccal.org](http://www.jccal.org) or call 205.325.8741 for more information.



# PREVENTING PLUMBING ISSUES



FOG is a shortened term for Fats, Oils, and Grease that enter the sanitary sewer system when poured down drains in homes, apartments, restaurants, and public facilities. FOG is often disposed of improperly during food preparation or kitchen cleanup. FOG attaches to other items in the sanitary sewer system, creating slow drains, blockages, and potential sewage overflows.

Some types of FOG are easy to recognize, such as the fats and oils from cooked meats, cooking oils, butter, and shortening. Other types of FOG are in items that might not readily come to mind, such as baked goods, food scraps, gravy, sauces, mayonnaise, and even sour cream!

A few changes can minimize FOG build-up in the sanitary sewer system. Always:

- Scrape grease and food scraps from pans and dishes into the trash for disposal. Use paper towels to remove excess oils before placing dishes in the sink or dishwasher.
- Recycle your used cooking oil and grease for free! Pour cooled FOG into a sealed container and bring it to one of the recycling stations similar to the one shown. Visit [www.jeffcoes.org](http://www.jeffcoes.org) to find a location near you.

**Fats, oils, and grease clog sink drains and sewer pipes, which are costly to repair.**

To report a sanitary sewer overflow, call 205-942-0681.  
 To report suspected water pollution within unincorporated  
 Jefferson County, call 205-325-5792  
 Within the City of Birmingham, call 311.  
 For all other municipalities, contact the local city hall.

# NOVEMBER 2025

## HELP PREVENT SANITARY SEWER OVERFLOWS THIS HOLIDAY SEASON!

The holiday season often involves cooking deep-fried turkeys and other fried foods, which produces a significant amount of used cooking oil and grease. Unfortunately, pouring these items down the kitchen sink drain can lead to problems at home and in the sanitary sewer system, thus causing backups and overflows that are costly to repair and unpleasant to smell.

Instead of pouring grease down the drain, let the grease cool, pour it into a sealed container, and bring it to one of the recycling stations around Jefferson County for free. Visit [www.jeffcoes.org](http://www.jeffcoes.org) to find a location near you.

Let's work together to keep our sewer system clean and functioning!

SUNDAY	MONDAY	TUESDAY	WEDNESDAY	THURSDAY	FRIDAY	SATURDAY
						<b>1</b>
<b>2</b> Daylight Savings Time Ends	<b>3</b> Diwali ( first day)	<b>4</b> Election Day	<b>5</b>	<b>6</b>	<b>7</b>	<b>8</b>
<b>9</b>	<b>10</b>	<b>11</b> Veterans Day	<b>12</b>	<b>13</b>	<b>14</b>	<b>15</b> America Recycles Day
<b>16</b>	<b>17</b>	<b>18</b>	<b>19</b>	<b>20</b>	<b>21</b>	<b>22</b>
<b>23</b>	<b>24</b>	<b>25</b>	<b>26</b>	<b>27</b> Thanksgiving Day	<b>28</b>	<b>29</b>
<b>30</b>	<b>SPECIAL EVENTS:</b> Get ready to gather your unwanted electronics for the FREE Electronic Recycling and Paper Shredding Event! This event is open to Jefferson County residents and typically takes place the last weekend in January at the Birmingham Zoo from 9:00 am - 11:30 am. Call 205-325-8741 or visit <a href="http://www.jccal.org">www.jccal.org</a> to verify the date and identify what you can bring.					



# PROTECTING WATERWAYS

Most people do not realize how closely tied we are to our waterways. Developed land decreases the amount of rain that can be absorbed in the ground and increases the need to divert water from paved areas. The Municipal Separate Storm Sewer System (MS4) funnels rainwater and anything it meets as it flows over our lawns, sidewalks, and roadways into our rivers, lakes, creeks, and streams. Everyday items that wash with rainwater from our homes and roads include drips from leaking vehicles, pet waste left on the ground, excess yard chemicals applied but not absorbed, trash from littering, and erosion from exposed soils. The items, commonly called polluted runoff, negatively impact 'our' water quality and everyone else's who lives downstream of Jefferson County, including along Mobile Bay and the Gulf of Mexico. That is why it is essential to properly dispose of your items in trash cans, participate in household hazardous and electronic collection days, maintain your vehicle, and cover all bare soil

Remember to keep it clean,  
Jefferson County, and allow only  
rain in the storm drain!

**Rainwater in Jefferson County ultimately drains to Mobile Bay, and, lastly, to the Gulf of Mexico!**



To report a sanitary sewer overflow, call 205-942-0681.  
 To report suspected water pollution within unincorporated  
 Jefferson County, call 205-325-5792  
 Within the City of Birmingham, call 311.  
 For all other municipalities, contact the local city hall.

# DECEMBER 2025

## AVOID FLUSHING "FLUSHABLE WIPES" DOWN THE TOILET!

They can cause blockages in the sewer system, which may lead to overflows. The so-called "flushable" wipes take much longer to break down than traditional toilet paper, which is designed to disintegrate in water when flushed into the sanitary sewer or septic tank. As wipes make their way down the pipes, rather than breaking down quickly, they create clogs that lead to blockages and cause sanitary sewer overflows. Wipes, including baby wipes, personal care wipes, and disinfecting wipes, do not break down easily in water like toilet paper does.

Always place all used wipes, "flushable" or not, in the household trash for proper disposal.

SUNDAY	MONDAY	TUESDAY	WEDNESDAY	THURSDAY	FRIDAY	SATURDAY
	<b>1</b>	<b>2</b>	<b>3</b>	<b>4</b>	<b>5</b>	<b>6</b>
<b>7</b>	<b>8</b>	<b>9</b>	<b>10</b>	<b>11</b>	<b>12</b>	<b>13</b>
<b>14</b> Hanukkah (begins at sundown)	<b>15</b>	<b>16</b>	<b>17</b>	<b>18</b>	<b>19</b>	<b>20</b>
<b>21</b>	<b>22</b> Hanukkah (ends at sundown)	<b>23</b>	<b>24</b> Christmas Eve	<b>25</b> Christmas Day	<b>26</b> Kwanzaa beings	<b>27</b>
<b>28</b>	<b>29</b>	<b>30</b>	<b>31</b> New Year's Eve	This calendar converts into posters that you can hang on the wall. When this month is over, safely remove the staples. The first 2 pages and the center page are now posters!		

### SPECIAL EVENTS:

Attend the upcoming Electronic FREE Drop-off and Paper Shredding Event, typically takes place the last weekend in January at the Birmingham Zoo from 9:00 am - 11:30 am. Call 205-325-8741 or visit [www.jccal.org](http://www.jccal.org) to verify the date and identify what you can bring.

Recycle your Christmas trees at the Birmingham Zoo; more information is available at [birminghamzoo.com](http://birminghamzoo.com).

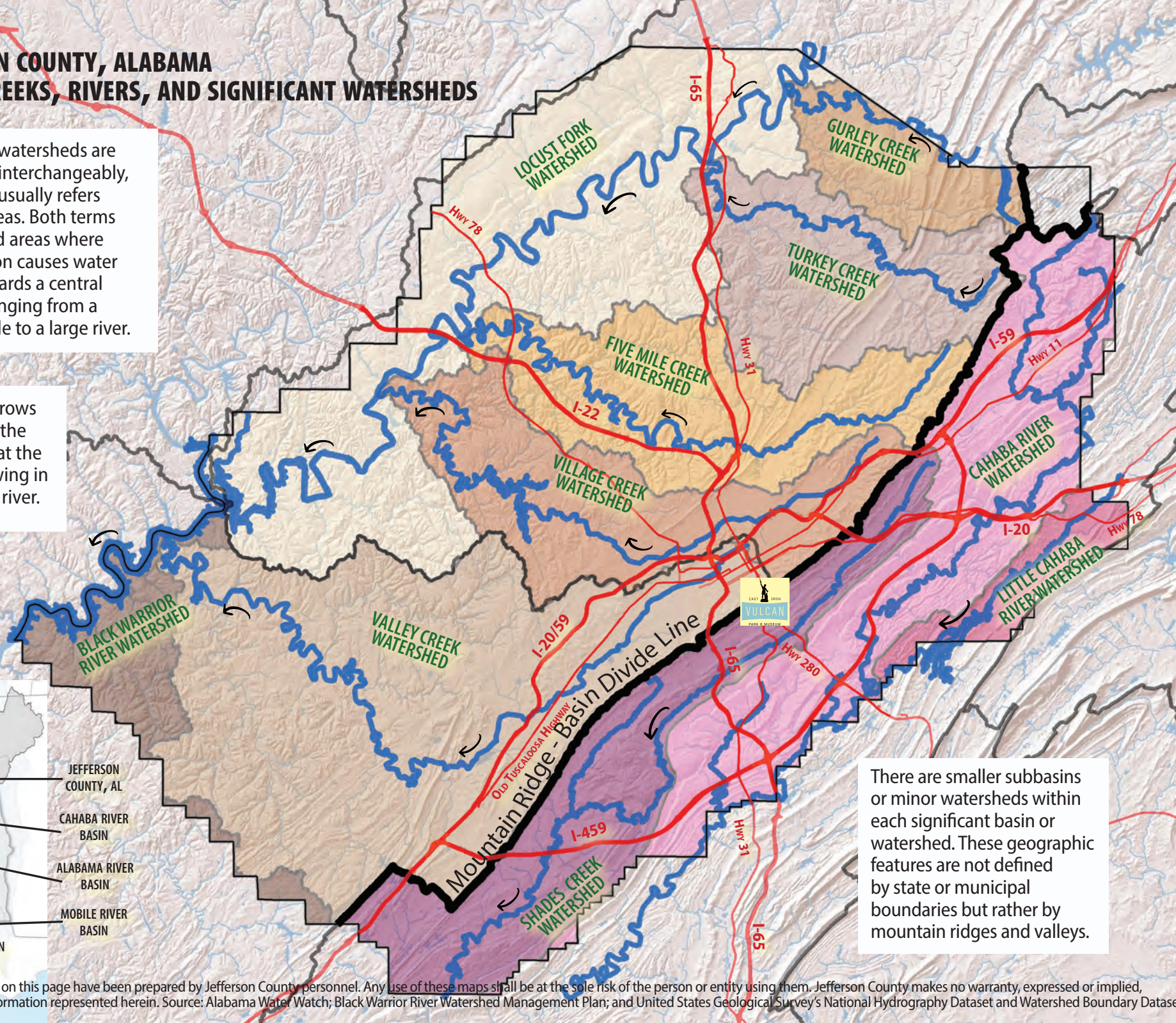


# JEFFERSON COUNTY, ALABAMA MAJOR CREEKS, RIVERS, AND SIGNIFICANT WATERSHEDS

Basins and watersheds are often used interchangeably, but "basin" usually refers to larger areas. Both terms refer to land areas where the elevation causes water to flow towards a central location, ranging from a small puddle to a large river.

The black arrows are to show the direction that the water is flowing in the creek or river.

TOMBIGBEE BASIN  
BLACK WARRIOR BASIN  
JEFFERSON COUNTY, AL  
CAHABA RIVER BASIN  
ALABAMA RIVER BASIN  
MOBILE RIVER BASIN  
MOBILE BAY BASIN & WATERSHEDS



There are smaller subbasins or minor watersheds within each significant basin or watershed. These geographic features are not defined by state or municipal boundaries but rather by mountain ridges and valleys.

The maps displayed on this page have been prepared by Jefferson County personnel. Any use of these maps shall be at the sole risk of the person or entity using them. Jefferson County makes no warranty, expressed or implied, as to the accuracy of the information represented herein. Source: Alabama Water Watch; Black Warrior River Watershed Management Plan; and United States Geological Survey's National Hydrography Dataset and Watershed Boundary Dataset.

## Personal Responsibility, Choices and Outcomes

Have you ever heard the phrase “take personal responsibility”? What does that really mean? Personal responsibility is accepting society’s standards for how individuals should behave and striving to live by those standards. It’s about obeying laws, following moral codes, and considering the potential impact of our actions on others. When we take personal responsibility, we are more likely to think before we act, and our choices often lead to better outcomes.

Taking personal responsibility looks like observing how people we respect, like family members or community leaders, handle challenges. It’s also about seizing opportunities to grow and connect with others. Taking responsibility for our actions, our role in the community, and our impact on the environment can make a big positive difference in our lives and the lives of those around us.

The 2025 calendar is not just a collection of ideas. It’s a practical guide to making a difference. It’s designed to inspire fresh perspectives and empower you to impact your community and environment positively. Discover valuable tips such as responsibly disposing of household hazardous waste and electronics, properly storing and applying yard chemicals, as well as maintaining vehicles. Join us in ensuring that only rain enters the stormwater drainage system. Let’s create a cleaner, healthier environment for all and be part of a more significant cause that benefits everyone.

## 2025 Waste Diversion Event Dates

Free events are available for Jefferson County residents to safely dispose of household quantities of hazardous waste, electronics, and TVs. Contact 205.325.8741 or visit [www.jccal.org](http://www.jccal.org) for event hours and locations and to learn about the items accepted.

Jan. 25 - Electronic Drop-Off / Paper Shredding Event

April 12 - Household Hazardous Waste Collection Events

May 10 - Electronic Drop-Off / Paper Shredding Event

June 14 - Electronic Drop-Off / Paper Shredding Event

Oct. 18 - Household Hazardous Waste Collection Events

## Water Resources and Contacts

### City of Bessemer Stormwater Program

[www.bessemeral.org/stormwater](http://www.bessemeral.org/stormwater); 205-424-4060

### City of Birmingham Stormwater Program

[www.birminghamal.gov/stormwatermanagement](http://www.birminghamal.gov/stormwatermanagement); 205-254-7771

### City of Leeds Stormwater Program

[www.leedsalabama.org/storm-water](http://www.leedsalabama.org/storm-water); 205-699-2585

### City of Hoover Stormwater Program

[www.hooveral.org/631/Stormwater-Management](http://www.hooveral.org/631/Stormwater-Management); 205-739-6888

### Jefferson County Department of Health Watershed Protection Program / SWMA 205-930-1999

[www.jcdh.org](http://www.jcdh.org) (search watershed protection program)

### Jefferson County Stormwater Program

[www.jccal.org](http://www.jccal.org); 205-325-8741

### ADEM [adem.state.al.us](http://adem.state.al.us); 334-260-4501

Statewide agency that administers the Municipal NPDES Stormwater Permit to local jurisdictions.

### Alabama Water Watch

[www.alabamawaterwatch.org](http://www.alabamawaterwatch.org)  
Statewide citizen-based water monitoring program.

### Alabama Rivers Alliance

[www.alabamarivers.org](http://www.alabamarivers.org)  
Statewide network of groups working to protect and restore all of Alabama’s water resources.

### Auburn University Water Resources Center

<https://aaes.auburn.edu/wrc>  
Providing research-based information for improved management and protection of Alabama’s water resources.

### Black Warrior Riverkeeper

[www.blackwarriorriver.org](http://www.blackwarriorriver.org)  
Promoting clean water throughout the Black Warrior River watershed.

### Cahaba River Society

[www.cahabariversociety.org](http://www.cahabariversociety.org)  
Working to protect and restore the Cahaba River watershed and its rich diversity of life.

### Cahaba Riverkeeper

[www.cahabariverkeeper.org](http://www.cahabariverkeeper.org)  
Working for the protection and ecological integrity of the Cahaba watershed.

### Freshwater Land Trust

[www.freshwaterlandtrust.org](http://www.freshwaterlandtrust.org)  
Conserving, connecting, and caring for land and water in Central Alabama.

### Friends of Shades Creek

[www.shadescreek.org](http://www.shadescreek.org)  
Working for the protection of, and responsible development, along Shades Creek.

### Jefferson County Conservation District

[www.jeffersonco.wixsite.com/jeffersonswcd](http://www.jeffersonco.wixsite.com/jeffersonswcd)  
Providing service, leadership, and assistance for the wise use, conservation, and development of natural resources.

### Village Creek Society, Inc.

[www.villagecreeksociety.org](http://www.villagecreeksociety.org)  
Seeking to improve Village Creek.



**CITY OF BIRMINGHAM**

**JEFFERSON COUNTY COMMISSION**

